

# NEWSLETTER

Telkom Telmor made in Poland



## BROADBAND AMPLIFIERS

The broadband amplifier is an amplifier with a large relative amplification bandwidth, ranging from at least several to several dozen MHz. The broadband amplifier is currently the most common device that guarantees the stability of the subscriber network.

In our offer, we focused on the reliability of this network element. In addition to its exemplary operating characteristics, a modern broadband amplifier must be equipped with a reliable power supply system. Thanks to the work of our engineers, voltage fluctuations in the network are no longer a problem.

### TENAC-130

- Hybrid Power Doubler output stage
- Easy configuration - universal JXP plug-in modules with by pass for continuous transmission during config
- Input / Output double overvoltage protection
- Remote power supply transferable to any output
- Robust, shock resistant metal housing
- 2 RF Outputs – divided by splitter/tap
- Plugin diplex filter for easy network upgrade



[www.telmor.pl](http://www.telmor.pl)

[Read More](#)



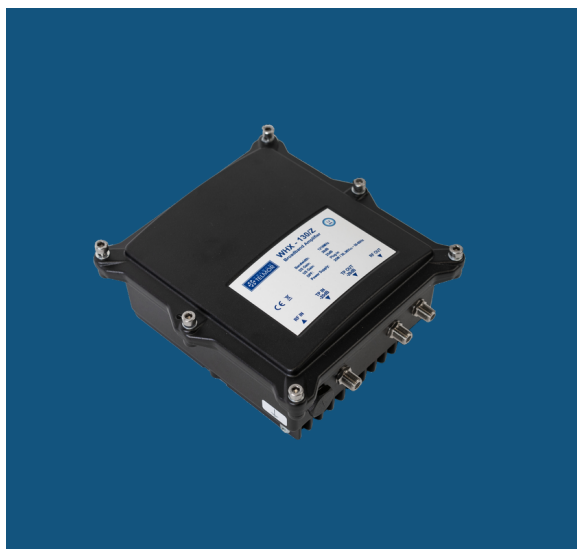
- Band up to 1.2GHz, DOCSIS 3.1 ready
- ALSC, PIVOT, signal analyzer
- Electronic control. Local: keypad + BT. Remotely: HDTIP
- 1 RF + TP output -20dB
- Gain - 33dB DS, 28dB US
- Max. output level - 108dB - full digital load 5x OFDM 256-1218MHz EQ-0dB
- Replaceable DPF inserts
- Proven die-cast housing with brackets for wall or mounting plate mounting
- Designed for any type of operator network with an Internet access system using DOCSIS technology
- Designed for outdoor and indoor use

**ECA-2000/3000****Trunk and Distribution Amplifier**

- Designed to fit modern HFC networks
- Full Digital Load 1.2GHz, 108dB $\mu$ V
- Gain 38/44dB
- Build-in ALSC functionality
- Electronically controlled + Bluetooth
- Remote management via HDTiP
- ECO modes (save up to 9W)
- 2 operating modes: distribution/trunk line
- Pivot 1/1,2GHz
- Cable simulator

**DASH**

- high output level: 120 dB $\mu$ V
- 1.2 GHz frequency range
- designed for DOCSIS 3.1/3.0
- active or passive return path
- input/ Output triple overvoltage protection
- 6kV Surge protection
- ingress filter (switchable)
- easy configuration
- locally or remotely powered depending on version
- high heat dissipation and shock resistant metal housing
- compact dimensions



- working frequency range: 1.2 GHz
- designed for DOCSIS 3.1 / 3.0
- ECO mode - lowering power consumption to min.16W (gain 38dB, max. Output level 111dBμV; KZ off)
- active or passive return path
- triple protection against high voltage on input / output
- surge protection: 6kV
- ingress filter (<12MHz or OFF)
- remote or local power supply versions
- metal, shock resistant casing

## WHO-929NG

### Contract product



- High output level: 114 dBμV (CENELEC 42)
- How quality low-noise amplification systems
- Designed for transferring high modulations
- Easy configuration - universal JXP plug-in modules
- Active or passive return path
- Remote power supply transferable to any output
- Two outputs – division and splitting options
- Robust, shock resistant housing

## WMX-822



- Bandwidth - 47..1002MHz
- Gain - 33,5dB
- Output and slope level set by potentiometers
- Locally powered - build-in power supply
- Surge protection
- High quality components, low noise <7dB
- Low power consumption - <6W

[Read More](#)